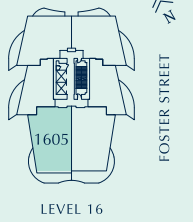
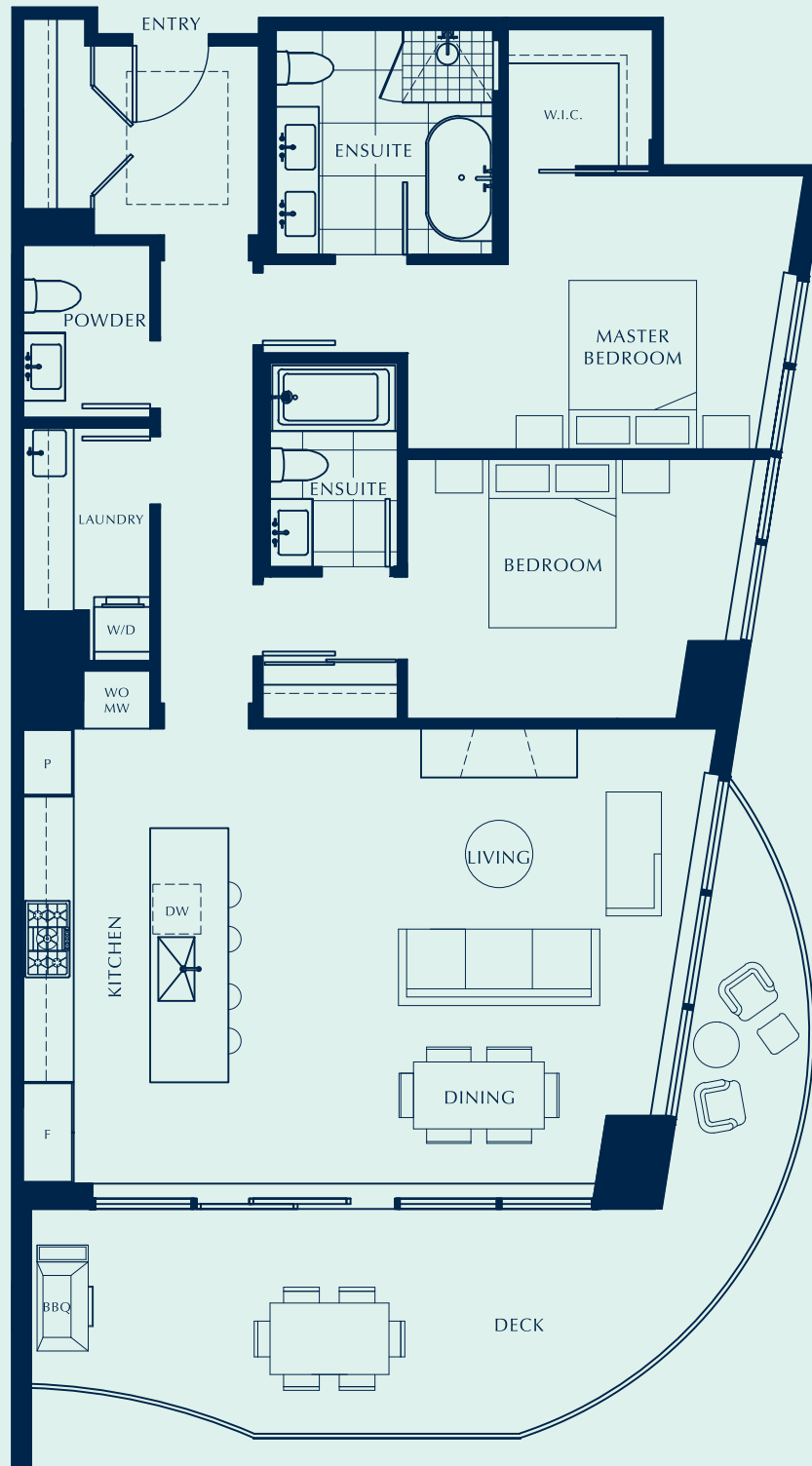


A2 2 BED, 2.5 BATH



INTERIOR 1,322 SQ FT
 EXTERIOR 271 SQ FT
 TOTAL 1,593 SQ FT

THE FOSTER



Unit numbering and floor numbers are currently subject to change, pending approval by the City of White Rock. If discrepancies occur, the unit number on the contract of purchase and sale will be deemed to be correct.

In our continuing effort to improve and maintain the high standard of the Foster Martin development, the developer reserves the right to modify or change plans, specifications, features and prices without notice. Materials may be substituted with equivalent or better at the developer's sole discretion. All dimensions and areas are approximate and are based on Architectural measurements. As reverse and/or mirrored plans occur throughout the development phases please see latest set of architectural plans for current layout if material to your decision to purchase. Illustrations and renderings are an artist's conception and are intended as a general reference only. Please see disclosure statement for specific offering details. E.&O.E.